



Roxtec SF-gjennomføring med SE PPS

Gjennomføring for flere plastrør.

Roxtec SE PPS med SF er en forlengelse av en standard Roxtec gjennomføring for beskyttelse av flere plastrør mot risikoen for brann. Tetningen tillater en blanding av rørmaterialer (metall og plast), og i visse tilfeller kabler, innenfor den samme åpningen. Gjennomføringens ramme har en flens som forenkler sveising til upresise hull. Standardmodulene er tilpasningsdyktige til kabler og rør av forskjellige størrelser, og kan brukes til å bygge inn ledig kapasitet i gjennomføringen.

- Enkel å vedlikeholde og inspisere



Produktegenskaper



Brannklassifisert



Vanntett



Gasstett

Struktur for installasjon



Metall

Festetype



Sveising

Graderinger og sertifikater

Brann

- A-KLASSE i henhold til IMO 2010 FTP-kode

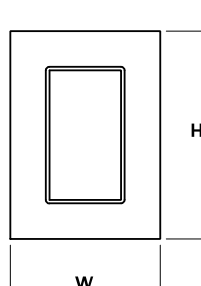
Tetthet

- Gass: 2,5 bar (katastrofalt)
- Vann: 4 bar (katastrofalt)

Rammedimensjoner

mm/kg

Rammevariantene nedenfor er et begrenset utvalg. Du kan besøke [roxtec.com](https://www.roxtec.com) for det komplette utvalget av rammer og konfigurasjoner.

	Tittel	Rammeåpninger	Fyllplass	Utvendige mål W x H x D	Utsparingsmål w x h	Vekt	Art.nr.
	SF 6x1 ALU	1	120 x 180	260.5 x 358 x 60	201(+15/-15) x 298(+15/-15)	2.9	SFF6000000131
	SF 6x2 ALU	2	120 x 180	391 x 358 x 60	332(+15/-15) x 298(+15/-15)	4.2	SFF6000000231
	SF 6x3 ALU	3	120 x 180	521.5 x 358 x 60	462(+15/-15) x 298(+15/-15)	6	SFF6000000331
	SF 6x1 PRIMED	1	120 x 180	260.5 x 358 x 60	201(+15/-15) x 298(+15/-15)	7.6	SFF6000000112
	SF 6x2 PRIMED	2	120 x 180	391 x 358 x 60	332(+15/-15) x 298(+15/-15)	12	SFF6000000212
	SF 6x3 PRIMED	3	120 x 180	521.5 x 358 x 60	462(+15/-15) x 298(+15/-15)	16.4	SFF6000000312
	SF 6x1 AISI316	1	120 x 180	260.5 x 358 x 60	201(+15/-15) x 298(+15/-15)	8.2	SFF6000000121
	SF 6x2 AISI316	2	120 x 180	391 x 358 x 60	332(+15/-15) x 298(+15/-15)	12.2	SFF6000000221
	SF 6x3 AISI316	3	120 x 180	521.5 x 358 x 60	462(+15/-15) x 298(+15/-15)	16.6	SFF6000000321



Tetningskomponentdata

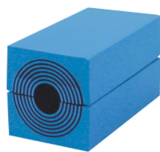
Tetningskomponenter



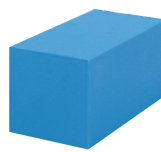
smøremiddel



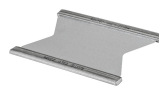
Wedge og Wedgekit



RM-modul med
Multidiameter™



RM blindmodul



Stagplate



SE PPS
forlengelsesramme



holderverktøy



kit-løsning



sveiseverktøy

For ytterligere informasjon, kan du besøke www.roxtec.com.

The product information provided by Roxtec does not release the purchaser of the Roxtec system, or part thereof, from the obligation to independently determine the suitability of the products for the intended process, installation and/or use.

Roxtec gives no guarantee for the Roxtec system or any part thereof and assumes no liability for any loss or damage whatsoever, whether direct, indirect, consequential, loss of profit or otherwise, occurred or caused by the Roxtec systems or installations containing components not manufactured by an authorized manufacturer and/or occurred or caused by the use of the Roxtec system in a manner or for an application other than for which the Roxtec system was designed or intended.

Roxtec expressly excludes any implied warranties of merchantability and fitness for a particular purpose and all other express or implied representations and warranties provided by statute or common law. User determines suitability of the Roxtec system for intended use and assumes all risk and liability in connection therewith. In no event shall Roxtec be liable for indirect, consequential, punitive, special, exemplary or incidental damages or losses.

The Roxtec products are offered and sold in accordance with the conditions of the Roxtec General Terms of Sales. The latest version of the Roxtec General Terms of Sales can be downloaded from <https://www.roxtec.com/en/about-us/about-roxtec/general-terms-of-sales/>

We reserve the right to make changes to the product and technical information without further notice. Any errors in print or entry are no claims for indemnity. The content of this publication is the property of Roxtec International AB and is protected by copyright.

This document was generated on: 2024-04-05